

COX DOME



Mono Therma



Thermal separation

The Mono Therma is a louvre ventilator for natural and fire ventilation. This ventilator is specially suitable for buildings with high standards of airtightness, thermal and acoustic insulation, and areas with high relative humidities. Thanks to its complete thermal separation and high standard of insulation, the formation of condensation can be practically precluded. The variety of versions and possible low overall height make the Mono Therma very suitable for industrial buildings, offices, shopping centres and atria.

Your partner in Smoke and Heat Ventilation



Mono Therma

Material

Hardened aluminium: sea water and corrosion resistant AlMg3. Sealing all round by EPDM rubbers, which prevents freezing and guarantees a high level of airtightness. The aluminium is supplied untreated, or polyester powder coated (ppc) in any RAL colour required. Moreover, the Mono Therma is also available in a 34dB acoustic version. Gauze screens and thermally separated elevations are optional.

Operation

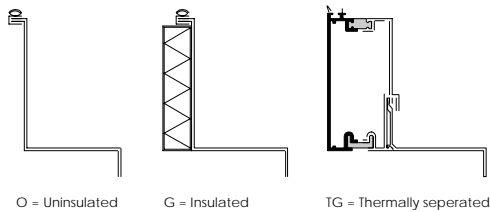
P2 double-acting compressed air operation

M motor operation

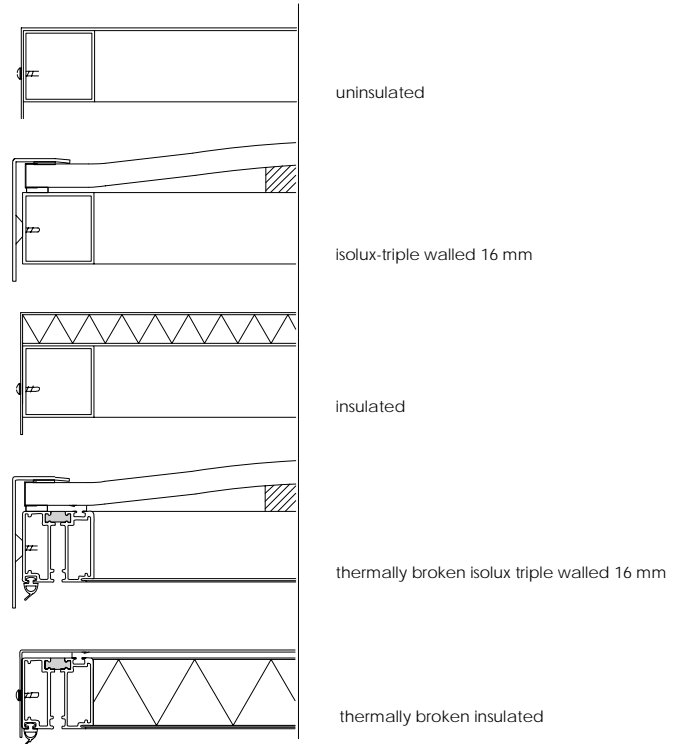
Suffix: **B** fire function

FS failsafe

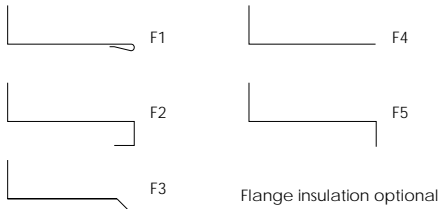
Base



Louvres



Flanges



TYPE	Weight with translucent		Weight with aluminium		Weight with polycarbonate		Height	Minimum throat size
	surface	surface	louvres	louvres	louvres	louvres		
1010 (min. size)	1.0	0.6	50	34	17	17	200	1000 x 1000
1225 (max. size + all sizes between)	3.0	1.8	120	102	45	45	200	1200 x 2500

Cross sections

